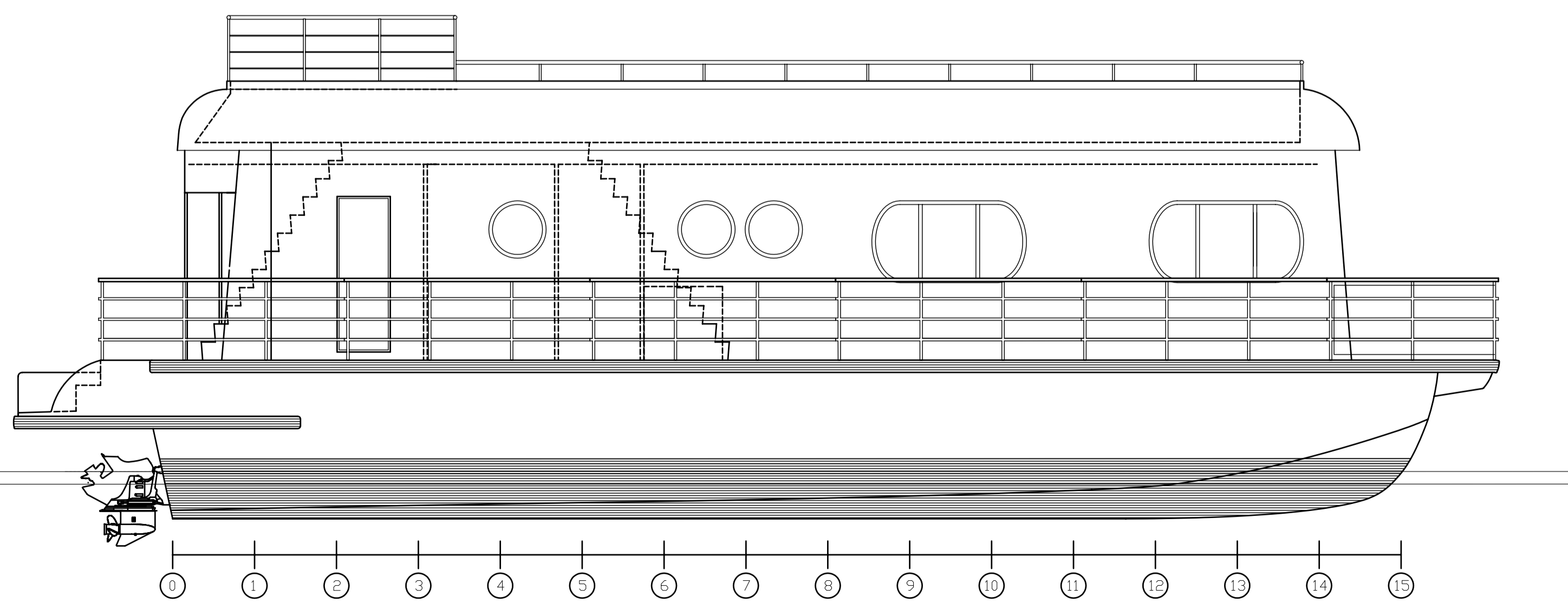
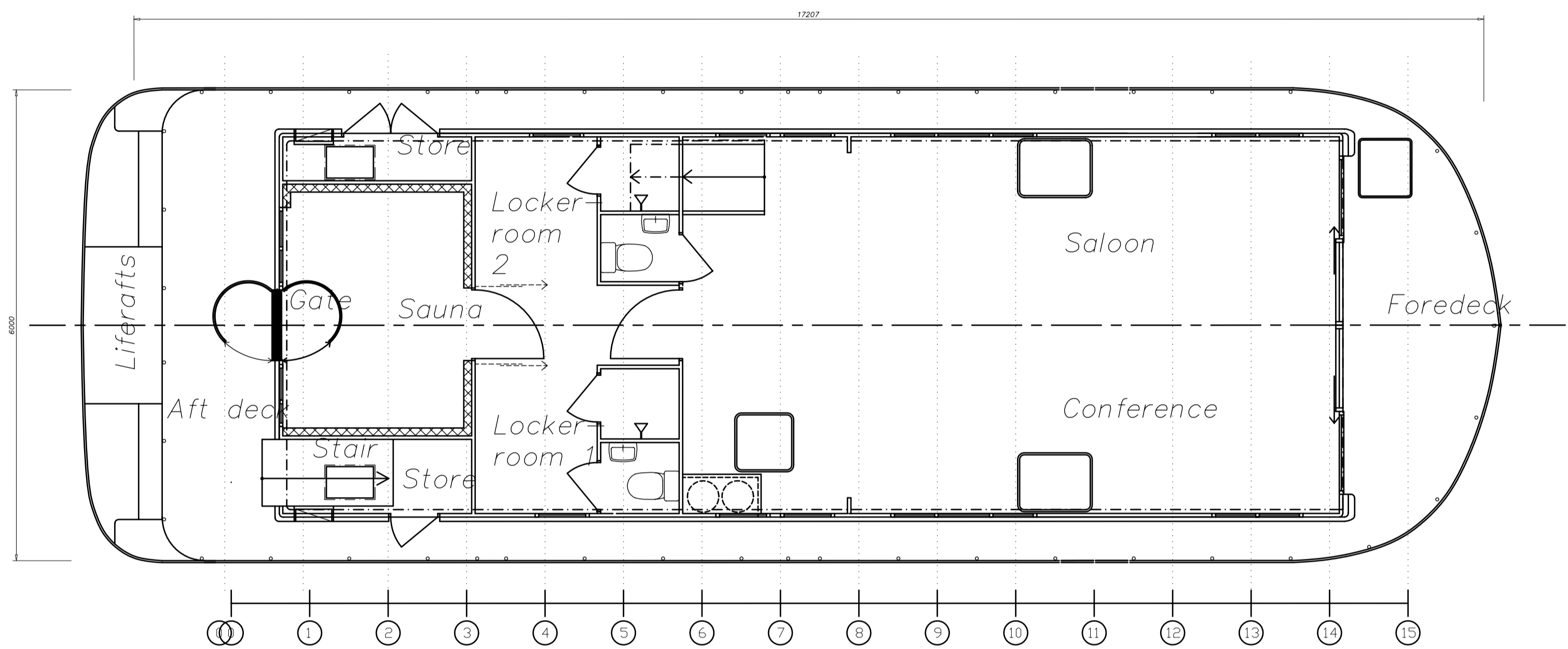


DIMENSIONS/DATA

LOA: 17,21m
 Beam: 6,00m
 Draft: 0,60m
 Displ: 23,0 tonnes Fully loaded

ENGINE: 2x VOLVO-PENTA D3-160-SX



ISSUE	DATE	MODIFICATION	DRAWN BY	APPROVED
6	2005-11-13	Shower/heads inhouse stairs updated	e.s.	j.g.
5	2005-11-07	Updates	e.s.	j.g.
4	2005-10-12	Deck locker fwd removed/Engine hatches moved inhouse		
		Side doors in bulwork , acrylic glass in rail at bow		
		Pool moved to port side, aft stair changed	e.s.	j.g.
3	2005-09-24	Sun deck wider longer, gunwhale height	e.s.	e.s.
2	2005-04-22	Windows in Sauna	e.s.	e.s.
1	2005-04-19	UPDATED	e.s.	e.s.

THIS DRAWING MUST NOT BE REPRODUCED OR USED FOR ANY PURPOSE, OTHER THAN IN CONNECTION WITH THE BOAT OR DESIGN FOR WHICH IT WAS DRAWN, WITHOUT THE DESIGNER'S WRITTEN CONSENT.

THE BUILDER MUST CHECK DIMENSIONS AND CONTENT GIVEN ON THE DRAWING AND ADVISE THE DESIGNER OF ANY DISCREPANCIES BEFORE COMMENCING CONSTRUCTION.

SEALOUNGE
 General arrangement

DATE 2005-01-30 DRAWN BY E. Segerlind

Eric R. Segerlind DESIGN

Eric R. Segerlind Design Phone: +46(0)70-569 07 36
 473 91 HENAN, SWEDEN email: eric.segerlind@telia.com

FRAMING NUMBER: SL-GA1
 SCALE: 1:50
 SHEET: 6 OF 7

Telefon +46 706 22 23 35
 www.sealounge.se
 jacob@sealounge.se

